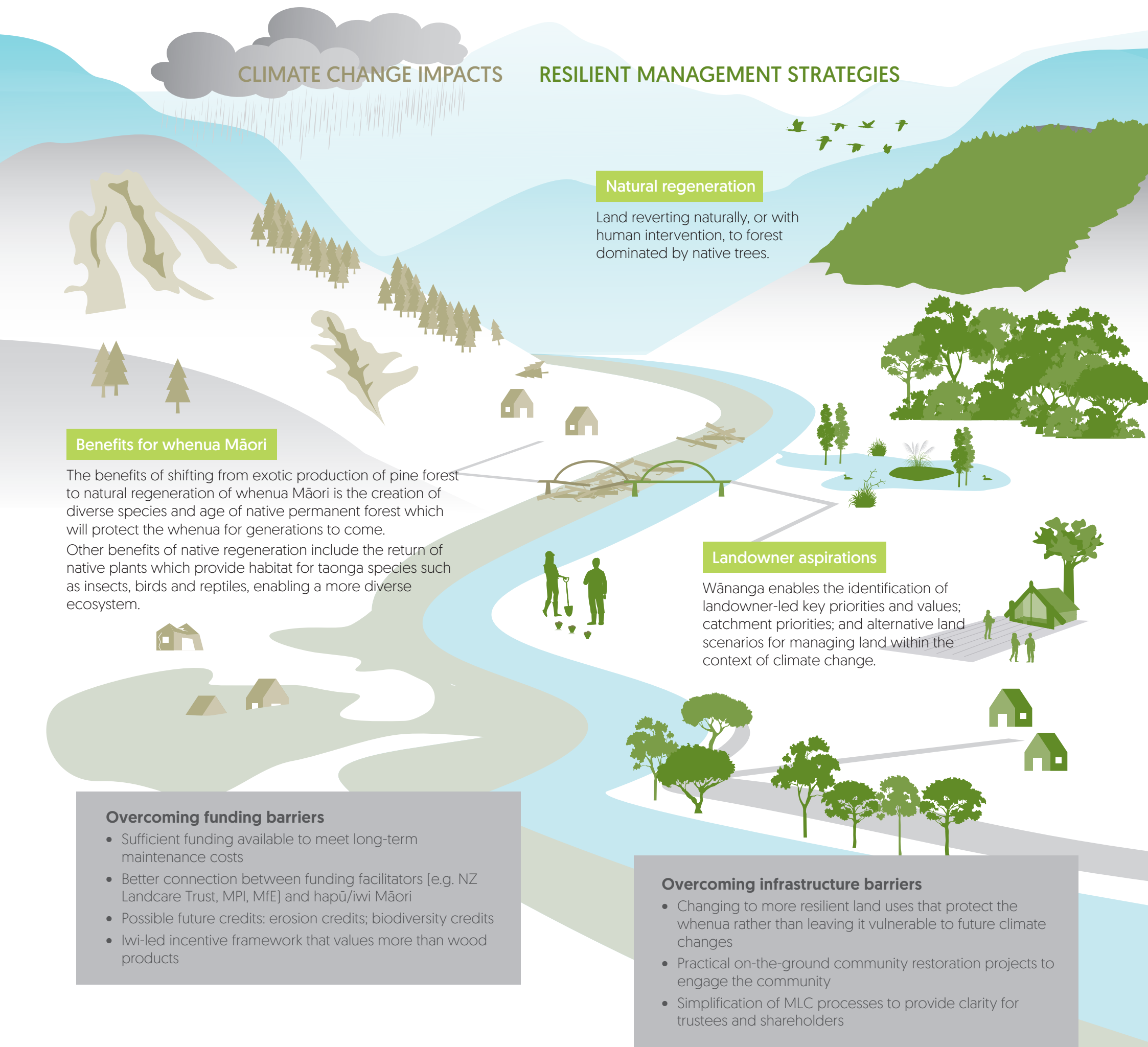


He Ngahere, He Korowai: Resilient land-use strategies for whenua Māori

Identifying resilient land uses on highly erosion-prone whenua Māori



CLIMATE CHANGE IMPACTS

RESILIENT MANAGEMENT STRATEGIES

Natural regeneration

Land reverting naturally, or with human intervention, to forest dominated by native trees.

Benefits for whenua Māori

The benefits of shifting from exotic production of pine forest to natural regeneration of whenua Māori is the creation of diverse species and age of native permanent forest which will protect the whenua for generations to come.

Other benefits of native regeneration include the return of native plants which provide habitat for taonga species such as insects, birds and reptiles, enabling a more diverse ecosystem.

Landowner aspirations

Wānanga enables the identification of landowner-led key priorities and values; catchment priorities; and alternative land scenarios for managing land within the context of climate change.

Overcoming funding barriers

- Sufficient funding available to meet long-term maintenance costs
- Better connection between funding facilitators (e.g. NZ Landcare Trust, MPI, MfE) and hapū/iwi Māori
- Possible future credits: erosion credits; biodiversity credits
- Iwi-led incentive framework that values more than wood products

Overcoming infrastructure barriers

- Changing to more resilient land uses that protect the whenua rather than leaving it vulnerable to future climate changes
- Practical on-the-ground community restoration projects to engage the community
- Simplification of MLC processes to provide clarity for trustees and shareholders

Need help?

- Sustainable land and water management | New Zealand Landcare Trust
- Native forests for our future | Tāne's Tree Trust

Ready to start?

- OurEnvironment | Manaaki Whenua Landcare Research
- Carbon forestry with regenerating natives | Scion Research
- Native Forest Restoration Guide | Auckland Council
- Regenerating Nature | Sustainable Business Network
- Natural regeneration of native trees | Tāne's Tree Trust

Scan here to go to the full list of links and resources

