

Puapuatai
Flower fungus



Kōpurawhetū
Basket fungus



Pūtawa, puku tawai
Beech beard



Ngā Hekaheka o Aotearoa

He kakara, he haunga rānei tōna?

Does it smell?

Pukurau
Puffballs



Hakeke
Wood ear

Our great forests of Tāne-mahuta hold a treasure trove of fungi (hekaheka), many only found in Aotearoa. Certain kinds of fungi were traditionally valued by Māori, like āwheto (vegetable caterpillar) which was burned and used to make ink for tā moko / tattooing.

Pekepekekiore
Icicle fungus



What is this fungus?

He aha tēnei hekaheka?

He aha tōna āhua?

What shape is it?



Harore
Honey mushroom

Tawaka
Poplar mushroom

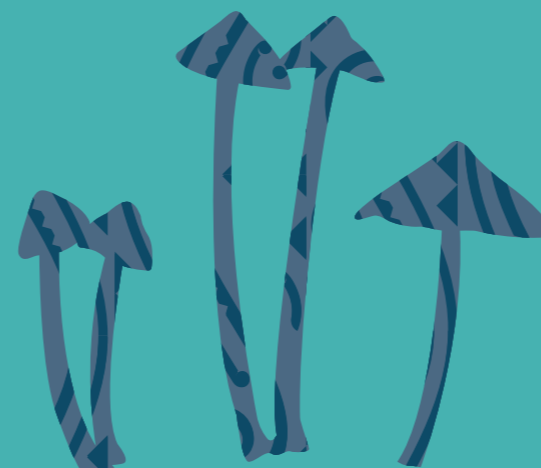


Sadly, some fungi have lost their place to live or have been affected by other changes and are now rare. Protection of Tāne-mahuta is important for all his descendants - the fungi, animals, and plants.

To download a copy of our bilingual teacher guide or a student booklet in te reo and learn more about ngā hekaheka, see: <https://www.landcareresearch.co.nz/news/ancestral-knowledge-in-the-classroom/>

Kei runga ia i te oneone, te tītītai, te rākau rānei?

Is it on soil, wood, or a tree?



Werewerekōkako
Sky blue mushroom

Harori-kai-pakeha
Field mushroom



Manaaki Whenua
Landcare Research